

SHIRE

BUILT AROUND OUR REPUTATION

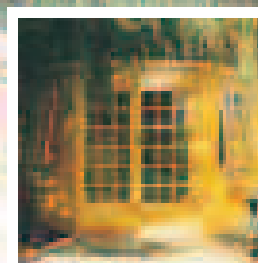
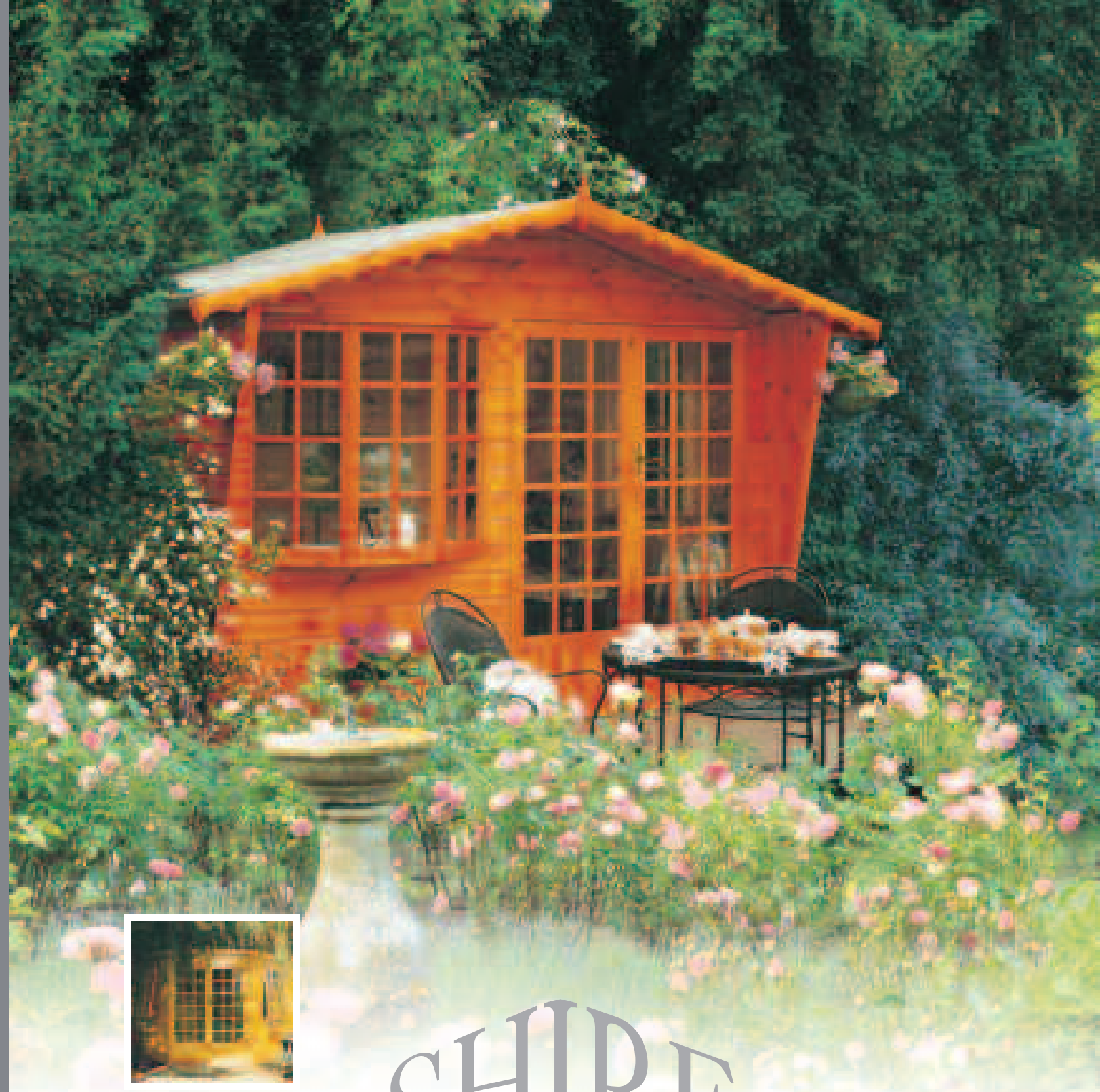
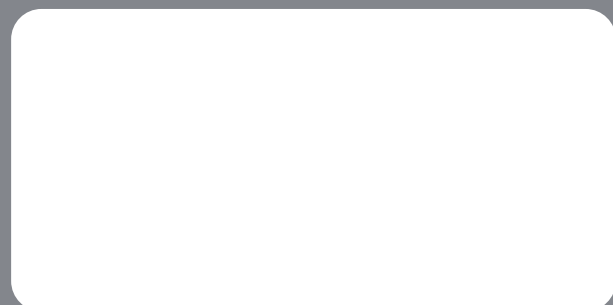
Brigstock Road, Wisbech,
Cambridgeshire PE13 3JJ

Tel: +44 (0) 1945 465295

Fax: +44 (0) 1945 468916

Email sales@shiregb.co.uk

www.shiregb.co.uk



SHIRE

BUILT AROUND OUR REPUTATION

Garden
Buildings

SHIRE

BUILT AROUND OUR REPUTATION

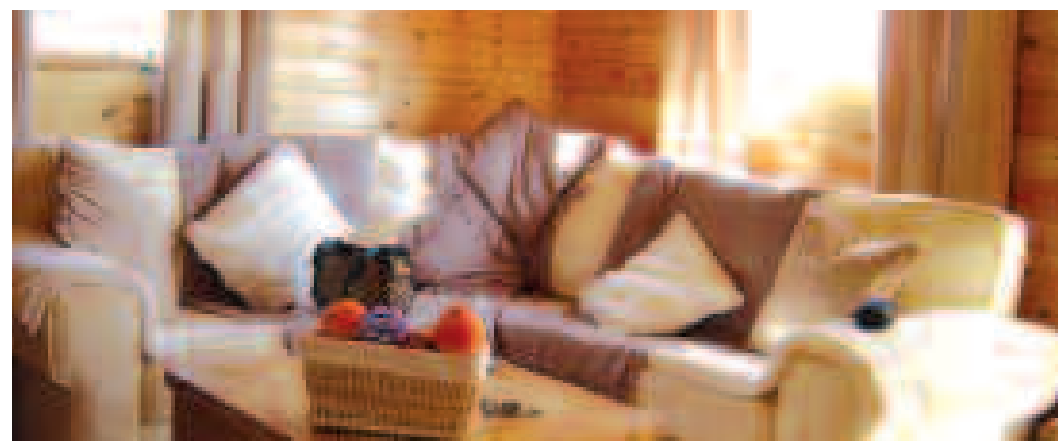


Welcome to Shire Garden Buildings

Shire was established in 1945 – our factories now occupy some 20 acres they have been developed into modern well equipped efficient facilities that include a planing mill, self contained joinery production, undercover timber store and large warehouses that can hold some 10,000 buildings in stock.

Shire manufactures a wide choice of products, garden buildings, pine lodges, decorative pressure treated fence panels, pet houses and deck kits. The garden buildings contained in this brochure are sold through our established network of distributors who are able to offer the extra benefits and services as required of a timed home delivery, base laying, assembly and product enhancement. Our distributors are able to advise you on any special design requirement you may have, whether this is a special size or height, a repositioning of a door(s) or window(s) or a totally bespoke building. You will also have the comfort of knowing that your building has been supplied by someone local who are there to continue to offer services as required. Some of our distributors have been with us for over 25 years!

Our distributors can also supply products from our other ranges for which brochures are freely available. If you encounter any problems then please contact us direct.



We hope you enjoy perusing through this brochure and that you find the building you require if not then please discuss your needs with our distributor. Most buildings are shown in our brochures decorated with flowers, tools, seats, toys etc these are shown for photographic purposes only and are not included in the sale of the building.

Simon Smeeth
MANAGING DIRECTOR



Shire PEFC Chain of Custody number
BMT - PEFC - 0097



Shire FSC Chain of Custody number
037 / TT - CoC - 1951

Call us on +44 (0) 1945 465295
or email sales@shiregb.co.uk

Brigstock Road, Wisbech, Cambridgeshire PE13 3JJ
Fax: +44 (0) 1945 468916 • www.shiregb.co.uk

Contents

All dimensions given in metric are correct – imperial dimensions are for guidance only.

MULTI-FUNCTIONAL GARDEN SHEDS 4	SUMMERHOUSES 20	Tudor Hutch 36
Suffolk 6	Elton 22	Avaiary Coop 36
Wroxham 6	Arreton 22	Poultry Coop 37
Bison Workshop 7	Milton 23	Hen House 37
Security Cabin 7	Winton 23	Tortoise Hutch 38
Security Apex 8		Run 38
Atlas 8		Giant Sloper 39
Norfolk 9		
Murrow Cornershed 9		
STORAGE SHEDS 10	LITTLE HOUSES 24	STORAGE 40
Caldey 12	Club 26	Jura Store 41
Lewis 12	Hobby 26	Garden Stores 41
Orkney 13	Bunker 27	Handy Store 42
Rothsay 13	Cottage 27	Giant Store 42
	Jailhouse 28	Useful Store 43
	Den 28	Bike Store 43
	Loft 29	Wheelie Bin Store 44
	Hide 29	Storage Box 44
	Bunny 29	
ROOMS FOR THE GARDEN 14	Lodge 30	DECK KITS 45
Beaulieu 16	Crib 30	Type 1 45
Fleur de Lys 16	Salcey 31	Type 2 45
Goodwood 17	Stork 31	Type 3 46
Woburn 17		Type 4 46
Blenheim 18	PET HOUSES 32	
Broadland 18	Sark 34	PINE LODGES 47
Windsor 19	Sanda Run 34	
Sandringham 19	Apex Dog Run 35	
	Pent Kennel 35	



Quality Without Compromise

Shire buildings are produced to the highest standards using quality timbers from sustainable sources. Timber sizes detailed are the actual sizes after the timber has been planed and profiled.

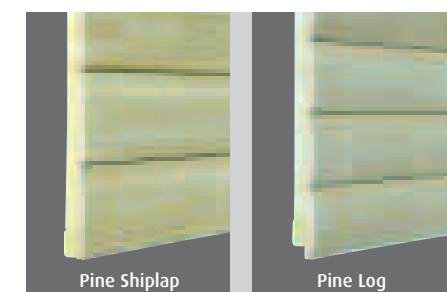
Normally the walls of all buildings will be manufactured using Pine tongue and groove (T&G) Shiplap pattern boarding 12 x 120 mm.

T&G Pine Log pattern 14 x 95 mm is another option you may wish to consider.

In all choices of wall timber Pine framework will be used (which varies in thickness dependant upon building 'range'). Pine T&G boarding 12 x 120 mm is used to produce roofs and floors unless otherwise stated.

All Details Considered

We are proud of our buildings and have endeavoured to consider all details in their design using quality fixtures and fittings – all exterior fittings are treated against rust and felt is green mineral with a 10 metre roll weighing 20 kilos. Facia, finishing timbers, assembly instructions, hardware and glass are supplied to enable assembly of the building.



Shire buildings are pre treated (unless otherwise specified) using a high quality anti-fungicide wood protection primer, our buildings are also available pressure – treated, which is the best long-term protection available.

Feedback Welcomed

As Shire are a progressive company customer feedback is welcomed. Shire reserve the right to modify design and/or specification. All sizes stated are approximate – the metric measurements stated refer to the floor size. When choosing a location for a building allowance should be made for roof overhangs. It is essential that all our buildings are assembled onto a firm, level base. Assembly onto an uneven base will cause problems.

We hope you enjoy looking through our brochure and trust that you are able to find a building to suit your purpose. If not, remember that buildings can be altered as you wish – windows added or taken away, make double doors, add a stable door, hinge the roof (yes, we were asked, and did, this) – you name it, we can do it. If you have any queries please telephone or visit your local distributor whose details can be found on the back of this brochure.



Suffolk PAGE 6

Decorative garden shed

Iceni PAGE 6

Shed/Greenhouse combo

Wroxham PAGE 6

Appealing transverse apex

Bison Workshop PAGE 7

Purpose built workshop

Mamouth PAGE 7

Stylish workshop

SHIRE
BUILT AROUND OUR REPUTATION

Security Apex PAGE 8

Store with confidence

Atlas PAGE 8

General utility building

Norfolk PAGE 9

Versatile workshop

Murrow Cornershed PAGE 9

Building for a corner location



Multi-functional Garden Sheds

Designed to Work

A range of attractive, functional buildings for the serious (or trainee) DIY'er, gardening enthusiast or contemplator!

A comfortable space to work in with a minimum INTERNAL eaves height of 1790 mm (6') – ridge heights will vary dependant upon the width of building but are a minimum internally of approximately 2110 mm (7'). Robustly constructed using sturdy wall framework measuring 45 x 45 mm (2 x 2") or 70 x 45 mm (3 x 2") see Bison and Momouth, spaced at not more than 800 mm (2' 8").

All windows are properly morticed and tenoned profiled and weather resistant, most are opening. The window has a unique profiled 'lip' which covers the aperture of the opening in the panel making it weather resistant. Casement stays have 2 levels of opening and are supplied fitted. 3mm horticultural glass is retained by profiled beading which is pre-mitred (no awkward corners to be cut).

Unless otherwise specified doors are 1780 mm (5' 10") high and 905mm (5' 11½") wide. Piano hinges are fitted on the right as standard (left hand hung can be specified) and supplied with a two way operational lock.

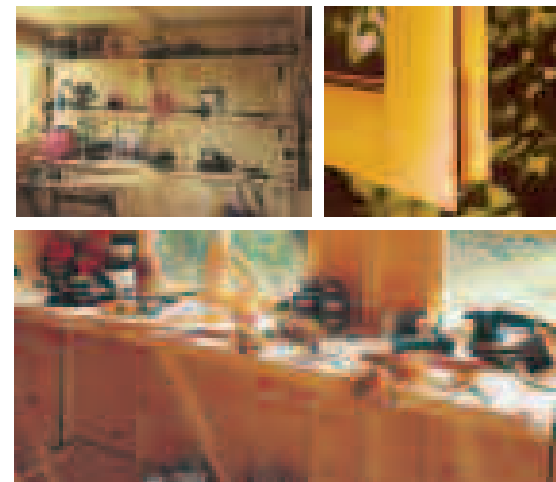
Optional extras for all of the 'Blue' range are:

Strengthened floor produced using 16 x 120 mm boarding on 45 x 45 mm (2 x 2") joists.

Shelving made from Pine boarding 19 x 95 mm and 250 mm (10") wide, supplied with all necessary fixings.

Workbench is made from Pine boarding 12 x 120 mm and is 475 mm (18¾") wide. Complete with all fixings necessary.

IMPORTANT: As a security measure all doors are robustly constructed and fitted with concealed full length piano hinges. All doors are hinged on the right unless otherwise ordered.



Suffolk

An attractive variation on the usual garden shed, one criss-cross opening window is supplied as standard – further windows may be purchased if required. The photograph shows 2390 x 1790 mm (8' x 6') style D with an extra window and door hung on the left as options. Don't forget, shelves and workbenches are also available.

SIZES

2390 x 1790 mm (8' x 6')
2990 x 1790 mm (10' x 6')
2990 x 2390 mm (10' x 8')

The first dimension shown refers to the side with the door.

Style C

Style D



This photograph shows 2390 x 1790 mm (8' x 6') style C with optional extra window to the left-hand side.

Wroxham

Bison Workshop

Large and larger. Manufactured using 70 x 45 mm (3 x 2") framework and with a 16 mm (5/8") floor on 70 x 45 mm (3 x 2") joists the Bison Workshop is ideal for all manner of working equipment or just for people who like (or need) lots of space to work in. The large fully opening windows make it the perfect working environment and the double doors – 1321 mm wide (4' 4") – allow easy access.

The photograph shows 3580 x 2990 mm (12' x 10') style A with an optional workbench.

SIZES

Style A

2990 x 2390 mm (10' x 8')
3580 x 2390 mm (12' x 8')
4180 x 2390 mm (14' x 8')

Style B

2990 x 2990 mm (10' x 10')
3580 x 2990 mm (12' x 10')
4180 x 2990 mm (14' x 10')

The first dimension shown refers to the side with the door.

4790 x 2390 mm (16' x 8')
4790 x 2990 mm (16' x 10')
5990 x 2990 mm (20' x 10')



Iceni

The Iceni is part greenhouse, part shed for a variety of uses – a truly multi-functional building. For safety reasons the large front window does not open and is supplied with plastic glazing, the opening side window is supplied with glass. The photograph shows 2390 x 2390 mm (8'x8') style B with workbench which is available as an optional extra as is the stable door.

SIZES

2390 x 1790 mm (8'x6')
2390 x 2390 mm (8'x8')

The first dimension shown refers to the side with the door.



Mamouth

A light and airy, stylish workshop. Manufactured using 70x45 mm (3 x 2") framework. Also has 16 mm (3/4") floor on 70 x 45 mm (3 x 2") joists. The large windows open fully and the double doors are in the centre of the long side and measure 1820 mm (5'11 1/2") high and 1450 mm (4'9") wide. Two windows, one either side of the doors, as standard. Loads of space, lots of light – ideal working conditions. Photograph shows 10x18 Mamouth with 2 optional windows and with optional shelves.

SIZES

To Be provided

3730 x 3590 mm (12' x 12')
3730 x 5385 mm (12' x 18')
3730 x 7180 mm (12' x 24V)
3730 x 8975 mm (12' x 30V)
3204 x 2990 mm (10' x 10V)
3204 x 4485 mm (10' x 15V)
3204 x 5980 mm (10' x 20V)
3204 x 7475 mm (10' x 25V)
3204 x 8970 mm (10' x 30')

The first dimension shown refers to the gable end.

Security Apex

Take extra care of those valuable tools by choosing this building designed to aid security. The high level fixed windows allow daylight in whilst not permitting intruders. The door is strongly constructed with a full-length hidden hinge and a good quality lock. Photograph shows 2390 x 1790 mm (8' x 6') pressure treated.

SIZES

2390 x 1790mm (8' x 6')
 2690 x 1790mm (9' x 6')
 2990 x 1790mm (10' x 6')
 2990 x 2390mm (10' x 8')
 2990 x 2990mm (10' x 10')

Style A

Style B



Norfolk

Opening windows along the front panel make the interior bright and airy and at 1790 mm (6') at the front the building is high enough for all but the tallest people to work in comfort – and for the tallest people the roof may be reversed (at no extra cost) putting the 'lower' 1790 mm (6') side at the back and 2110+ mm (7'+) at the front. The photograph shows 2690 x 1790 mm (9' x 6') style B. An optional workbench would be the ideal finishing touch.

SIZES

2690 x 1790 mm (9' x 6')
 2990 x 1790 mm (10' x 6')
 2990 x 2390 mm (10' x 8')
 The 2nd dimension shown refers to the side with the door.

Style A

Style B

Atlas

Where to put the lawn mower and do some DIY? The Atlas must be your answer, big enough for the ride on lawn mower and still space available for the larger projects to be undertaken. The photograph shows 2990 x 1790 mm (10' x 6') style A with double door option. An optional shelf would save on precious floor space and allow your tools to be immediately to hand.

SIZES

2690 x 1790 mm (9' x 6')
 2990 x 1790 mm (10' x 6')
 2990 x 2390 mm (10' x 8')
 2990 x 2990 mm (10' x 10')

The 2nd dimension shown refers to the side with the door.

Style A

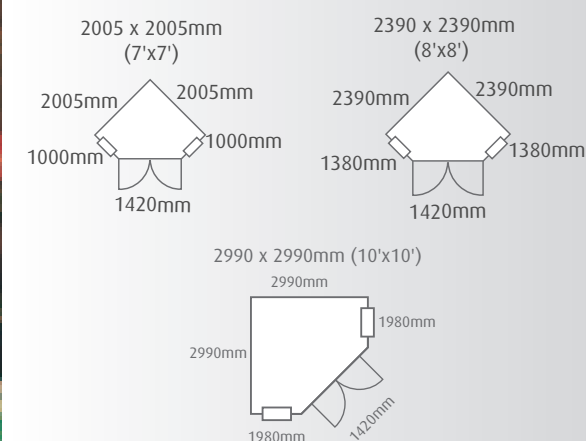
Style B



Murrow Cornershed

The Murrow Cornershed fits nicely into any size of garden allowing ample work and/or storage space whilst making the best use of a corner. The photograph shows 2005 x 2005 mm (7' x 7') with optional shelving.

SIZES





Caldey

Caldey PAGE 12
Complete versatility

Lewis PAGE 12
Storage no problem

Orkney PAGE 13
Verandah an option

Rothesay PAGE 13
Shed or summerhouse?



SHIRE
BUILT AROUND OUR REPUTATION

Storage Sheds

Ideal for Storage

Ranges of buildings that look attractive and yet when in use will create more space in your house, garage or loft. Ample storage space is provided with a minimum external eaves height of 1775 mm (5' 9") – ridge heights will vary dependant upon the width of building but are a minimum internally of 1833 mm (6' 0").

Strongly constructed using 35 x 35 mm (1 1/4" x 1 1/4") wall framework spaced not more than 800mm (2' 8") apart.

Unless otherwise specified doors are 1695 mm (5'6 1/2") high and 762 mm (2'6") wide. Piano hinges are fitted on the right hand standard (left hand hung can be specified) and supplied with a two way operational lock.

Joinery made morticed & tenoned windows are profiled for weather resistance. The 3 mm glass is retained using profiled beading, which is premitred.

IMPORTANT: As a security measure all doors are robustly constructed and fitted with concealed full length piano hinges. All doors are hinged on the right unless otherwise ordered.



Caldey

Complete versatility is catered for by the choice of door and window layout provided in the styles available. By design additional headroom is afforded adjacent to the windows. The photograph shows 2390 x 1790 (8' x 6') style A.

SIZES

1790 x 1190 mm (6' x 4')
A + B + C + D: 1 fixed window

2090 x 1490 mm (7' x 5')

A + B: 2 fixed windows

C + D: 1 fixed window

2390 x 1790 mm (8' x 6')

A + B: 3 fixed windows

C + D: 2 fixed windows

2990 x 1790 mm (10' x 6')

A + B: 2 x 2 fixed windows

C + D: 2 fixed windows

2990 x 2390 mm (10' x 8')

A + B: 2 x 2 fixed windows

C + D: 2 fixed windows

3590 x 2390 mm (12' x 8')

A + B: 2 x 2 fixed windows

C + D: 2 fixed windows

The first dimension shown refers to the side with the window or window and door.

Style A

Style B

Style C

Style D



Orkney

Every bit as useful as a 'normal' door in the end garden building – just more attractive – the roof overhang without the optional verandah is 160 mm (6"). Four fixed windows are fitted as standard. The side panels are interchangeable – the side windows will then be at the back of the building which may suit your purpose better. The photograph shows 2390 x 1790 mm (8'x6') without verandah (see Rothesay for photo of verandah).

SIZES

2090 x 1490 mm (7' x 5')

2390 x 1790 mm (8' x 6')

2990 x 1790 mm (10' x 6')

With optional 900 mm (3') verandah (see Rothesay)

2090 x 2390 mm (7' x 8')

2390 x 2690 mm (8' x 9')

2990 x 2690 mm (10' x 9')

The first dimension shown refers to the side with the door.

Lewis

An extra room in the garden to store all those household items that clutter your kitchen or under the stairs – or for the lawnmower and garden tools – or even both. As large or as small as you need. The photograph shows 2390 x 1790 mm (8' x 6') style B.

Style A

Style B

SIZES

1790 x 1190 mm (6' x 4')

1 fixed window

2090 x 1490 mm (7' x 5')

2 fixed windows

2390 x 1790 mm (8' x 6')

3 fixed windows

2990 x 1790 mm (10' x 6') - 2 x 2

fixed windows

2990 x 2390 mm (10' x 8')

2 x 2 fixed windows

3590 x 2390 mm (12' x 8')

A + B: 2 x 2 fixed windows

The first dimension shown refers to the side with the window.



Rothesay

Summerhouse or shed – distinctly decorative whilst retaining all the functionality required of a garden building. Three decorative, opening windows are fitted as standard and an additional side window is available as an option. The side panel with window may be positioned at either side. The photograph shows 1980 x 1790 mm (7' x 6') with optional verandah. Roof overhang without verandah is 160 mm (6") – as Orkney.

SIZES

1980 x 1490 mm (7' x 5')

1980 x 1790 mm (7' x 6')

2990 x 1790 mm (10' x 6')

With optional 900 mm (3') verandah

1980 x 2390 mm (7' x 8')

1980 x 2690 mm (7' x 9')

2990 x 2690 mm (10' x 9')

The first dimension shown refers to the side with the door.



Sandringham

Beaulieu PAGE 16

A superior garden room

Fleur De Lys PAGE 16

Features unique bay window

Goodwood PAGE 17

The perfect retreat

Woburn PAGE 17

Delightful with verandah

Blenheim PAGE 18

Contemporary style

Security Cabin PAGE 18

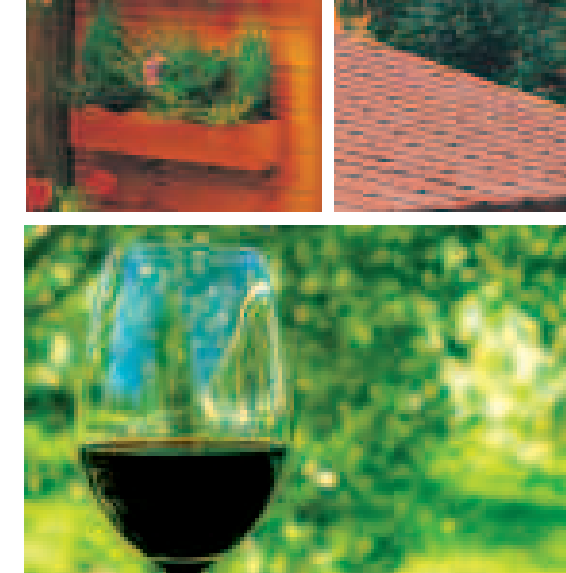
With security features

Windsor PAGE 19

Fantastic finish to any corner

Sandringham PAGE 19

Georgian glazed beauty



SHIRE
BUILT AROUND OUR REPUTATION

Rooms for the Garden

Beautiful and Useful

With an internal eaves height of 1790 mm (6') and a ridge height of 2110 mm (7') and over our 'Gold' range of Garden Rooms are suitable for almost anything – an extra room for overnight guests, an ideal place to serve drinks during your barbeque, to have sight but not sound of the children – or vice versa, or just simply to relax in and enjoy your garden.

Constructed using the best quality solid Pine with wall framework measuring 45 x 45 mm (2 x 2"), spaced at not more than 800 mm (2' 8").

All windows are properly morticed and tenoned, they are opening, profiled and weather resistant. The window has a unique profiled 'lip' that covers the aperture of the opening in the panel making it weather resistant.

Brass casement stays have 2 levels of opening and are supplied fitted. 3 mm horticultural glass is retained by profiled beading that is pre-mitred (no awkward corners to be cut).

Doors are morticed and tenoned, profiled and weather resistant – they match the windows, with weather resistant lip and mitred beading.

Doors are 1732 mm (5' 8¼") high – double doors have a total width of 1350 mm (4' 5¼") – the 'lip' covers the aperture. Brass handles add the finishing touch.

Facia that has been shaped into gentle curves and completes the look of sophisticated charm. No detail has been overlooked – the finial is even shaped! If you choose a building with a verandah the balustrade will be shaped.

We pride ourselves on our attention to detail – doors, windows, beading, facia, finials and if applicable balustrade railings and window boxes are all designed to fully co-ordinate with each other adding 'star quality' to beautifully designed buildings.

Optional extras for all of the 'Gold' range are:

Window boxes. Shaped to co-ordinate with the shaped facia.

Toughened glass. 4 mm toughened to comply with BS6206 instead of 3 mm horticultural.

Felt tiles give a tiled effect and are available in red (pictured above), green or black.



Beaulieu

An attractive well designed building – an idyllic garden-room.

Two windows on each side and two on the front (six in total) provide a light, airy building. The Beaulieu can be insulated and/or lined with solid pine boarding and even sub-divided to form more than one room. The photograph shows 3580 x 3580 mm (12' x 12') produced in Log pattern cladding with optional window boxes.

SIZES

2990 x 2390 mm (10' x 8')
2990 x 2990 mm (10' x 10')
2990 x 3580 mm (10' x 12')
3580 x 3580 mm (12' x 12')
The first dimension refers to the side with the door.



Goodwood

Our unique non-opening profiled bay window adds distinction to a classic design. Matching opening side windows, as seen on the Beaulieu, are available as an option. The photograph shows 2990 x 2390 mm (10' x 8') with optional opening side windows.

SIZES

2690 x 1790 mm (9' x 6')
2990 x 1790 mm (10' x 6')
2990 x 2390 mm (10' x 8')
2990 x 2990 mm (10' x 10')
The first dimension refers to the side with the door.

Style C

Style D

Fleur De Lys

A charming building that will add a touch of panache to your garden, its graceful proportions enhanced by enchanting Georgian lattices conspire together to ensure that the building will be the centre-piece of your garden design. An extra side window is available as an optional extra. The photograph shows 2390 x 2090 mm (8' x 7') + optional verandah 900 mm (3'), with optional extra side window.

SIZES

2390 x 1790 mm (8' x 6')
2390 x 2090 mm (8' x 7')
2390 x 2390 mm (8' x 8')
With optional 900 mm (3') verandah:
The first dimension refers to the side with the door.



Woburn

The many large windows allow panoramic views of your garden from which to enjoy the warmth of a summer-day, delightful with or without the optional verandah. The roof overhang is 300 mm (1') without verandah. Two opening side windows as pictured are supplied as standard. The front windows do not open. The photograph shows 2690 x 1790 mm with optional 900 mm verandah (9' x 6' + 3' verandah).

SIZES

2690 x 1790 mm (9' x 6')
2690 x 2390 mm (9' x 8')
2990 x 2390 mm (10' x 8')
With optional 900 mm (3') verandah:
2690 x 2690 mm (9' x 9')
2690 x 3290 mm (9' x 11')
2990 x 3290 mm (10' x 11')
The first dimension refers to the side with the door.
Not available with front panel 2390 mm (8').

Blenheim

Clever bi fold doors allow this contemporary Summerhouse to be opened along the 2990 mm (10') side.

The two opening side windows are supplied as standard. The Summerhouse is pictured with optional felt tiles. Photograph shows 2990 x 1790 mm (10' x 6')

SIZE

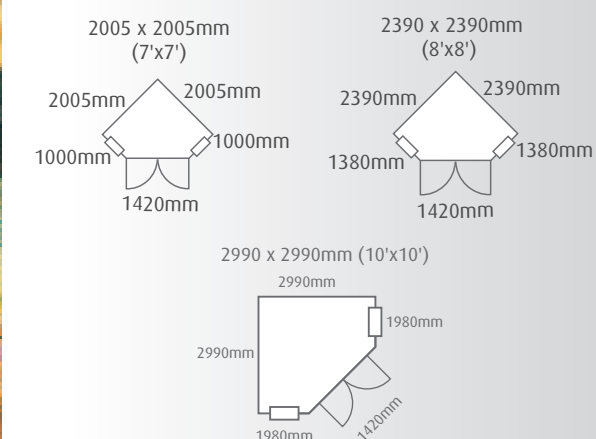
2990 x 1790 mm (10' x 6')
2990 x 2390 mm (10' x 8')
The first dimension refers to the side with the door.



Windsor

Ingeniously shaped to be primarily but not exclusively sited in a corner location providing an inspirational feature. The Georgian style double doors and opening windows ensure ample light and ventilation whilst allowing a remarkably wide viewing angle from which to appreciate your garden. The photograph shows 2390 x 2390 mm (8' x 8') with optional window boxes. Not supplied with profiled fascia.

SIZES

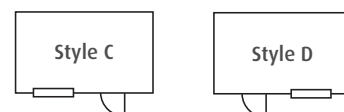


Security Cabin

It is possible to have an attractive and secure building. For security the door is fitted with a piano hinge and shutters function. The window opens inwards. The door and shutters are supplied with decorative olde world style false hinges. The side windows and window boxes are optional extras. The photograph shows 2990 x 2390 mm (10' x 8') with optional window box.

SIZES

2690 x 1790 mm (9' x 6')
3990 x 1790 mm (10' x 6')
2990 x 2390 mm (10' x 8')
2990 x 2990 mm (10' x 10')
The first dimension shown refers to the side with the door.



Sandringham

Double doors co-ordinate with our unique bay window to give the Sandringham character and quality. Matching opening side windows, as seen on the Beaulieu, are available as an option. The photograph shows 2990 x 2390 mm (10' x 8') style C with two optional opening side windows.

SIZES

2990 x 1790 mm (10' x 6')
2990 x 2390 mm (10' x 8')
The first dimension refers to the side with the door.





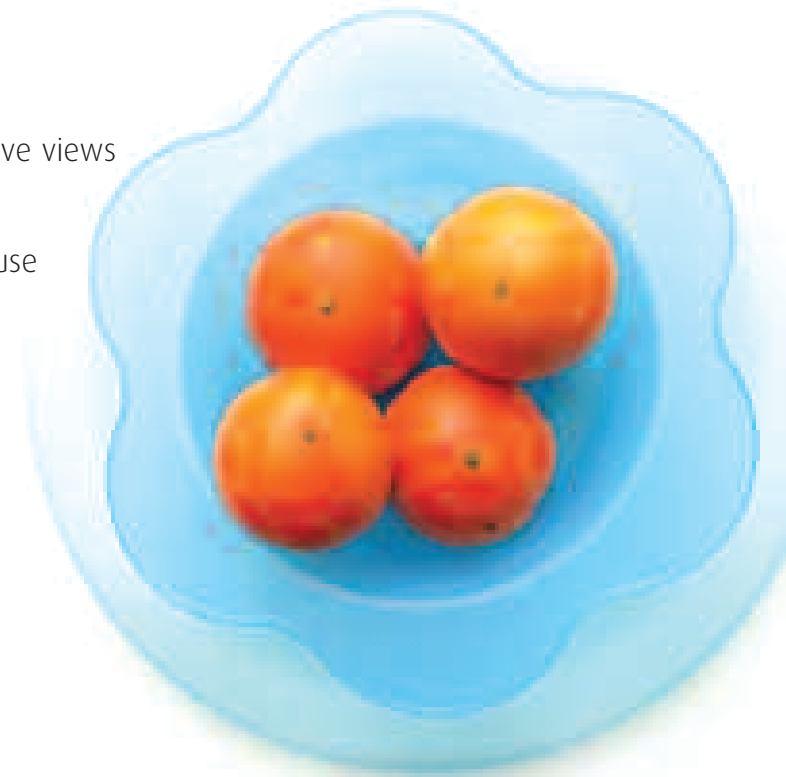
Arreton

Elton PAGE 22
Three-quarter length windows

Arreton PAGE 22
Eight sides – unusual shape

Milton PAGE 23
Allows comprehensive views

Winton PAGE 23
A shady summerhouse



SHIRE
BUILT AROUND OUR REPUTATION

Summerhouses

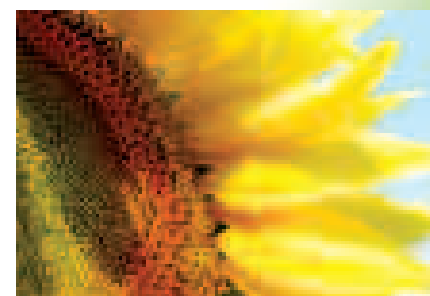
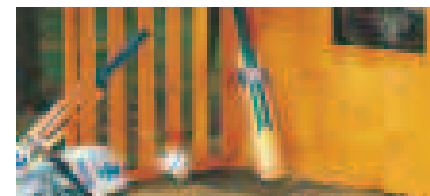
Relax and Enjoy

After all the hard work sit back and appreciate the beauty of your garden, or sit and enjoy a good book in peace and tranquillity. The eaves are 1715 mm (5' 7½") internally with a minimum height of 1833 mm (6' ½") at the ridge (ridge heights will vary dependant upon the width of the building).

Walls are constructed using 35 x 35 mm (1¼" x 1¼") spaced at no more than 800 mm (2' 8") intervals.

Fixed attractive framed windows are properly morticed and tenoned – they are profiled and weather resistant with our unique profiled 'lip'. Pre-mitred and profiled beading holds 3 mm horticultural glass in position.

Doors are 1610 mm (5' 3½") high and double doors have a width of 1350 mm (4' 5¼") morticed and tenoned, profiled and weather resistant – they co-ordinate with the windows, again with mitred beading and profiled 'lip'.



Elton

Savour the privacy of your garden with this well defined summerhouse. Large three quarter glazed double criss-cross windows are fixed – the matching single door creates a light and stylish chalet. The roof overhang is 300 mm (1'). The photograph shows 1980 mm x 1790 mm (7' x 6').

SIZE

1980 x 1490 mm (7' x 5')
1980 x 1790 mm (7' x 6')
2990 x 1790 mm (10' x 6')
The first dimension refers to the side with the door.



Milton

Enjoy comprehensive views of your garden from this appealing summerhouse with its roof overhang of 300 mm (1') and large glazed front doors with matching fixed side lights ensuring a perception of space and comfort. One fixed side window is fitted as standard but can be made to open as an option. The photograph shows 2390 x 1790 mm (8' x 6') with optional verandah and opening side window.

SIZES

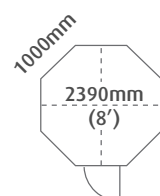
2390 x 1790 mm (8' x 6')
2390 x 2390 mm (8' x 8')
With optional 900 mm (3') verandah:
2390 x 2690 mm (8' x 9')
2390 x 3290 mm (8' x 11')
The first dimension refers to the side with the door.

Arreton

A truly unique and beautiful centre point for any garden. A private office, or just a place to sit quietly and contemplate? Windows in the side walls, as shown in the photograph, fixed or opening, are available as optional extras. Window boxes as pictured may also be purchased as required. The roof is produced using orientated strand board.

SIZE

2390 x 2390 mm (8' x 8')



Winton

The correlation between the double doors and side window gives distinction, the optional shady canopy adds a certain style. The roof overhang without the canopy is 300 mm (1'). A further side window is an optional extra. The photograph shows 2390 mm x 1790 mm with 900 mm (8' x 6' + 3') canopy.

SIZES

2390 x 1790 mm (8' x 6')
2390 x 2390 mm (8' x 8')
With optional 900 mm (3') canopy:
2390 x 2690 mm (8' x 9')
2390 x 3290 mm (8' x 11')
The first dimension refers to the side with the door.



Hobby

Club PAGE 26

Cute and shady

Hobby PAGE 26

Charming with canopy

Bunker PAGE 27

A getaway from parents

Cottage PAGE 27

Delightful dormer window

Jailhouse PAGE 28

For cowboys and indians?

Den PAGE 28

Premier playhouse

Loft PAGE 29

Complete with upstairs

Hide PAGE 29

Suits a small garden

Bunny PAGE 29

Xxxxxx

Lodge PAGE 30

A place for a sleepover?

Crib PAGE 30

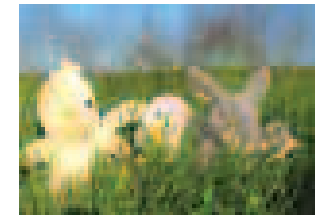
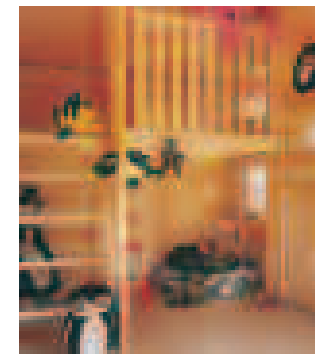
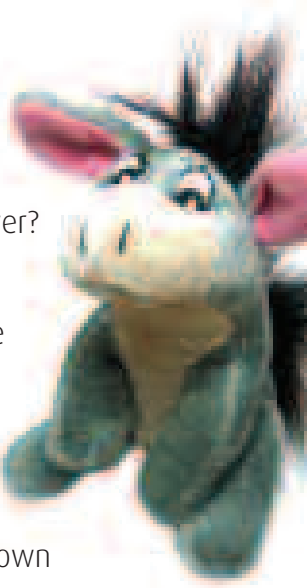
A versatile playhouse

Salcey PAGE 31

Strength in design

Stork PAGE 31

A space to call their own



SHIRE
BUILT AROUND OUR REPUTATION

Little Houses

For Little People

How to keep children occupied during the school holidays? An age old problem that can be helped by the gift of their own little house. Years of pleasure will result for both user and spectator.

Eaves and ridge heights vary from little house to little house, some windows open and some are fixed – individual specification is given against each building. The attractively framed windows are properly morticed and tenoned – they are profiled and weather resistant with our unique profiled ‘lip’.

SAFETY FIRST

As a safety precaution all windows are provided with plastic glazing material which is held in place by pre-mitred and profiled beading.

Walls are constructed using 35 x 35 mm (1½ x 1½") spaced at no more than 800 mm (2'8") intervals.

The roofs of the Club, Bunker and Hide are produced using Oriented Strand Board.

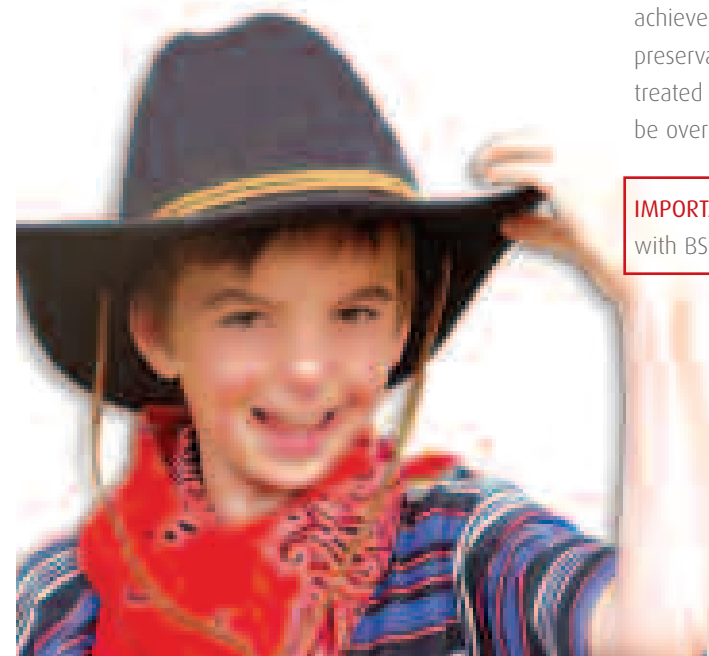
Some little houses are supplied with shaped fascia, window boxes and verandah railings – all co-ordinated with the attention to detail found on the windows to give a stunning effect.

Shaped fascia, window boxes and railings are available as optional extras if not included as standard with the building.

Felt tiles are available as an option in red or green – as shown on The Cottage and The Loft.

Our photographs show what may be achieved with the application of coloured preservative. Buildings are supplied pre-treated in a honey brown colour that can be over painted and coloured as you wish.

IMPORTANT: All Little Houses comply with BS5665 EN71.



Club

A delightful building finished with a cute and shady canopy. The large non-opening cris-cross window gives a light and airy interior. The shaped fascia as shown in the photograph is available as an optional extra.

SIZE

1490 x 1190 mm (5' x 4')
plus 300 mm (1') canopy.
Internal eaves height: 1240 mm (4' 1")
Internal ridge height: 1515 mm (5')
The first dimension refers to the side with the door.



Bunker

'Water gun ports' and observation points are for the commander and his troops whilst the 'enemy' (all parents) either try to attack or retreat to a quiet house. Upside down shaped fascia along the front edge softens the lines and completes every little boy's (or girl's) dream. The door is 795 mm (2' 7½") high.

SIZE

1790 x 1190 mm (6' x 4')
Internal eaves height: 910 mm (3')
Internal ridge height: 1610 mm (5' 3½")
The first dimension refers to the side with the door.



Hobby

A charming building which will give continued pleasure for many years. Front windows are fixed, fascia and canopy railings are not shaped as standard.

SIZE

1790 x 1190 mm (6' x 4')
plus 595 mm (2') canopy.
Internal eaves height: 1240 mm (4' 1")
Internal ridge height: 1570 mm (5' 2")
The first dimension refers to the side with the door.



Cottage

A 'Hansel and Gretel' dream cottage in your own garden. Five windows – including one opening side window and a delightful dormer window – add a fairy tale charm. Shaped fascia and two window boxes add the finishing touches. The 'upstairs' is as detailed in The Loft and further window boxes are available as required. The photograph shows the option of felt tiles.

SIZE

1790 x 2390 mm (6' x 8')
Internal eaves height: 1365 mm (4' 6") + 1720 mm (6')
Internal ridge height: 2360 mm (7' 10")
The first dimension refers to the side with the door.



Jailhouse

Every sheriff's dream house. Something for the indians to capture? Undoubtedly great fun! Fixed wooden 'bar' design windows and stable door with slatted verandah floor and 'horse' rail complete this appealing building. Supplied without nameplate.

SIZE

1790 x 1190 mm (6' x 4') plus 595 mm (2') verandah.
Internal eaves height (back): 1579 mm (5'2")
Internal ridge height: 1768 mm (5'9")
The first dimension refers to the side with the door.



Loft

Step into a world of make-belief. A beautiful building that because of its stunning appearance will give pleasure to all who see it. The side window opens, all other lower windows may open as an option. Artificial shutters and profiled fascia complete the picture.

Two shaped window boxes are supplied as standard and others may be purchased as required. The 'upstairs' is 830 x 1720 mm (2' 9" x 6') and comes complete with balustrade, ladder and banister rail. The photograph shows optional felt tiles and window boxes.

SIZE

2390 x 1790 mm (8' x 6')
Internal eaves height: 1365 mm (4' 6") + 1720 mm (6')
Internal ridge height: 2360 mm (7' 10")
The first dimension refers to the side with the door.



Den

Grandparents looking for a gift that will give lasting pleasure need look no further. Shaped window boxes and decorative shutters to both side windows, along with shaped fascia and verandah railings, add prestige to this delightful house. Front windows are fixed and both side windows open.

SIZE

1790 x 1190 mm (6' x 4') plus 595 mm (2') canopy.
Internal eaves height: 1240 mm (4' 1")
Internal ridge height: 1570 mm (5' 2")
The first dimension refers to the side with the door.



Hide

Pretty and petite. The fixed side window and shaped fascia to the front (there is no fascia provided for the back) add to the charm of this 'darling' building. The optional verandah as shown in the photograph has railings that are not shaped.

Bunny

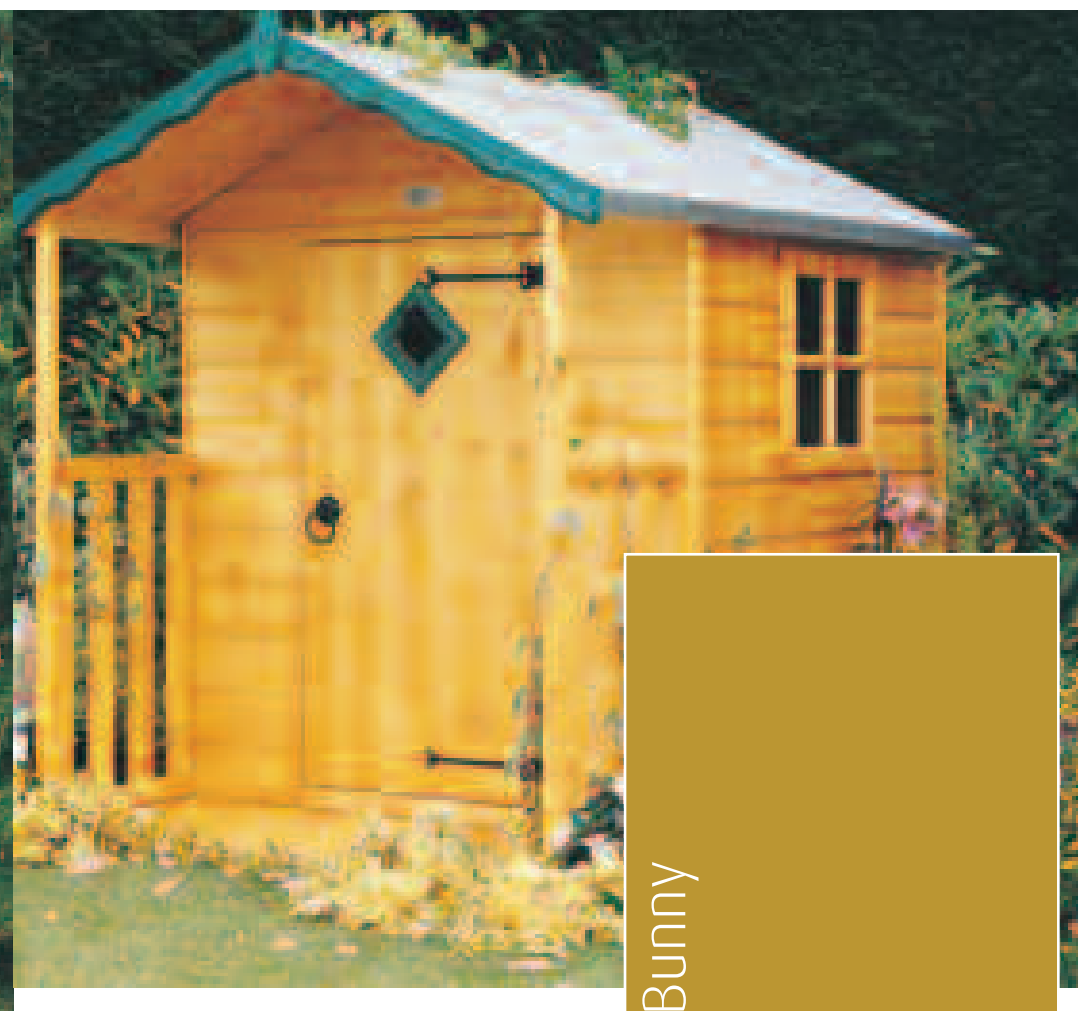
Cute and appealing. Roof trim and window box are optional extras.

SIZE HIDE

1190 x 1190 mm (4' x 4')
With optional 510 mm (1' 8") verandah, 1190 x 1700 mm (4' x 5' 8")
Internal eaves height: 1240 mm (4' 1")
Internal ridge height: 1460 mm (4' 9½")
The first dimension refers to the side with the door.

SIZE BUNNY

1190 x 1190mm (4'x 4')
Internal eaves height: 1160 mm (??)
Internal ridge height: 1490 mm (??)



Bunny

Lodge

A playroom outside! A place for visiting playmates to sleep over? The loft area is above the verandah therefore not impeding the internal height of the usable floor area. The Lodge is for the larger garden it has been cleverly designed to maximise space whilst retaining a stunning appearance.

SIZE

2390 (G) x 2690 mm (8' x 9') including verandah.
1874 mm exterior eaves height,
2680 mm exterior ridge height.
The first dimension refers to the side with the door.



Salcey

This playhouse is one of the highest specification playhouses available with 28 mm thick interlocking logs to the four sides. We have managed to combine tremendous strength in construction whilst maintaining an exquisite design.

SIZE

1790 (G) x 2090 mm including verandah (6' x 7')
1251 mm exterior eaves height,
1541 mm exterior ridge height.
The first dimension refers to the side with the door.

Crib

A playhouse for both son and daughter? 'Garage doors' in the side that are cleverly positioned under the bunk area allow for 'vehicles of destruction' to be safely garaged

SIZE

2090(G) x 1790 mm (7' x 6')
1752/1391 mm exterior eaves height,
2340 mm exterior ridge height.
The first dimension refers to the side with the door.



Stork

We all wish for a space to call 'my own!' The picture shows the optional platform which adds an extra 1000 mm (3') in height. The ladder maybe positioned to the side as pictured or at the front.

SIZE

1790 (G) x 1190 mm + 600 mm canopy (6' x 4' x 2')
Internal eaves height:
1154 mm (3'9½")
Internal ridge height:
1566 mm (5'1½")
The first dimension refers to the side with the door.



Sark Kennel

Sark Kennels PAGE 34

Home for a friend

Sanda Run PAGE 34

Kennel and run

Apex Dog Run PAGE 35

For the larger dog

Pent Kennel PAGE 35

Xxxxx xxxx xxxx

Tudor Hutch PAGE 36

Xxxxx xxxx xxxx

Aviary Coop PAGE 36

Xxxxx xxxx xxxx

Poultry Coop PAGE 37

Xxxxx xxxx xxxx

Hen House PAGE 37

Xxxxx xxxx xxxx

Tortoise House PAGE 38

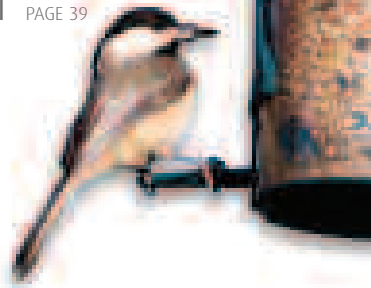
Xxxxx xxxx xxxx

Run PAGE 38

Xxxxx xxxx xxxx

Giant Sloper PAGE 39

Xxxxx xxxx xxxx



SHIRE
BUILT AROUND OUR REPUTATION

Pet Houses



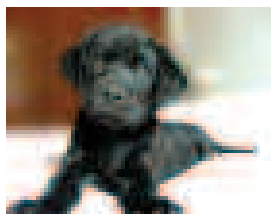
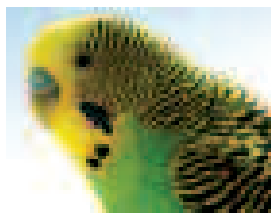
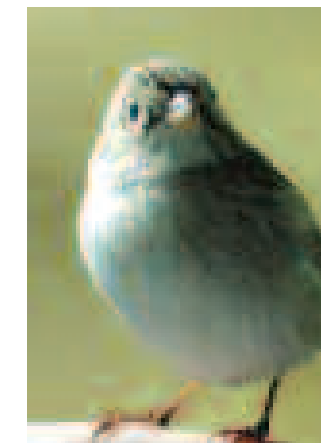
Innovative Places

Do you have a 'friend' who requires special accommodation? All items shown in this range are made from solid Pine, unless otherwise stated, the cladding is Pine Shiplap pattern and the framework is 35 x 35 mm (1¼" x 1¼"). Some parts may be produced from Oriented Strand Board (OSB) which is a hard wearing wooden alternative to Pine.

Some items will be provided with unique and very attractive corner cover strips which compliment our profiled fascia.

All items are supplied pre-treated (except Picnic Bench).

If you have any other item you may like produced from timber – please provide a photograph or drawing and we will be happy to quote.



Request our brochure,
simply by calling us on
01945 465295
or emailing
sales@shiregb.co.uk

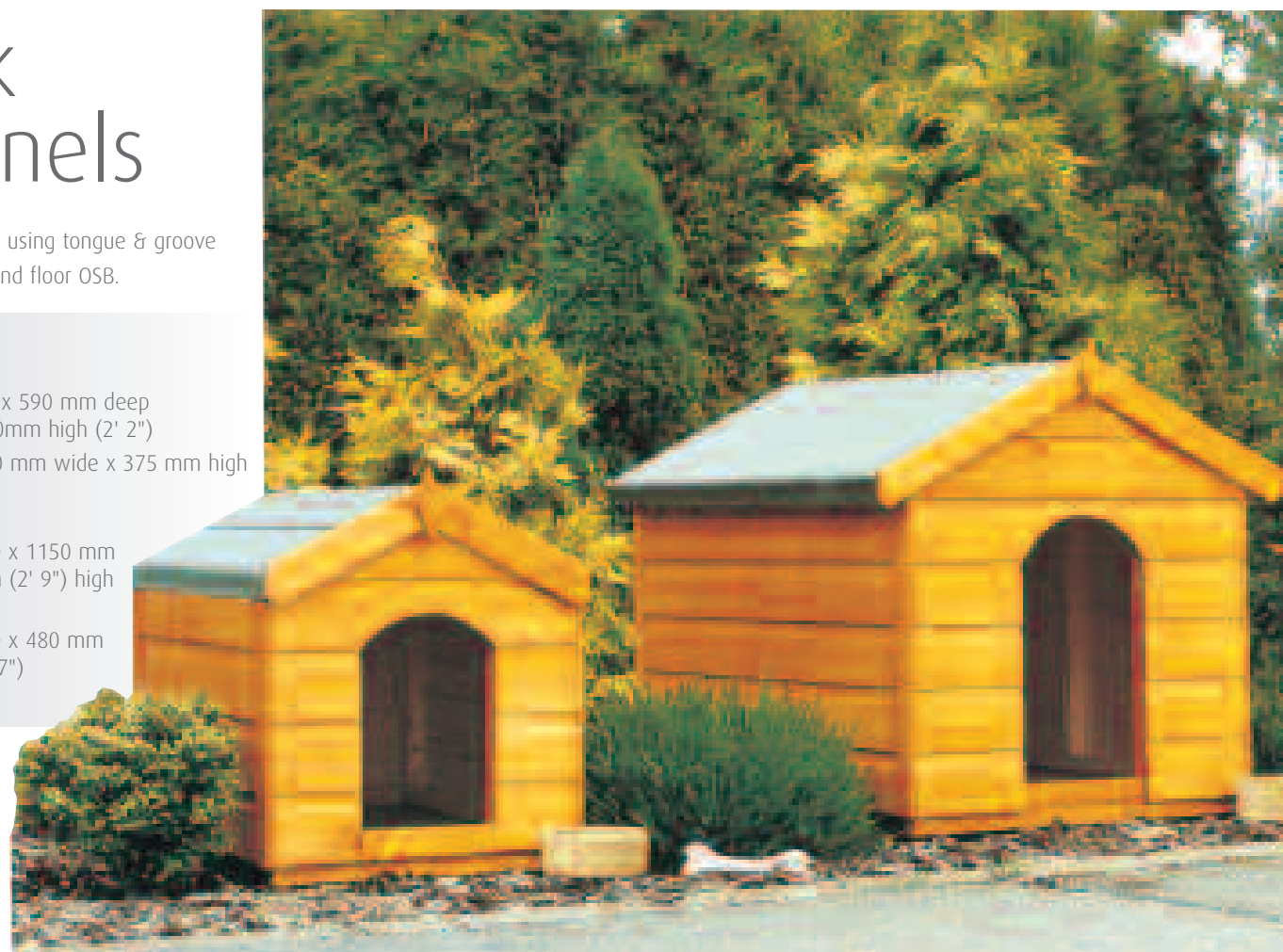


Sark Kennels

Wall produced using tongue & groove shiplap, roof and floor OSB.

SIZE

Small:
680mm wide x 590 mm deep
(2' x 2'8") 670mm high (2' 2")
Opening - 260 mm wide x 375 mm high
(10" x 1' 3")
Large:
710 mm wide x 1150 mm
deep 870 mm (2' 9") high
Opening:
260 mm wide x 480 mm
high (10"x 1' 7")



Apex Dog Run

Designed primarily for the larger dog the kennel comes with a choice of three run lengths. Two personnel doors allow easy access to all areas.

SIZES

Kennel size:
1980 x 1058 mm (6' 6" x 3' 6")
Run size:
1980 x 990 mm (6' 6" x 3' 3")
1980 x 1980 mm (6' 6" x 6' 6")
1980 or 2970 mm (6' 6" x 9' 9")
External eaves height:
1756 mm (5'9")
External ridge height:
2090 mm (6'10½")



Sanda Run

The roof and floor are produced from OSB. The run is produced without a floor. There are separate personal doors to kennel and run. Sliding door for dog use from kennel to run.

SIZES

1190 x 1190 mm (4' x 4') kennel
with 1790 mm (6') long run.
1190 x 1190 mm (4' x 4') kennel
with 2390 mm (8') long run.
External heights: eaves 1487 mm
(4' 10½"), ridge 1687 mm (5' 6½").



Pent Kennel

The 2nd dimension refers to the side with the doorway. The roof and floor of both kennels are produced using OSB

SIZES

Small:
810 x 600 mm (2'8" x 2')
990 mm high (2'2")
Opening
260 mm wide x 440 mm high
(10" x 1'5")
Large:
1190 x 750 mm (3'11" x 2'5")
990 mm high (3'3")
Opening
350 mm wide x 750 mm high
(14" x 2'5")



Tudor Hutch

Complete with exercise run. Tongue and roof walls and floor, OSB roof.n it has been cleverly designed to maximise space whilst retaining a stunning appearance.

SIZE

1490 mm wide x 890 mm deep
(4'11" x 2'11")
860 mm high (1'3")



Aviary Coop

Nesting area is produced using tongue and groove for the walls and OSB for the roof and floor. End opening panel for easy acces. The run has no floor.

SIZE

950 mm w x 2780 mm deep (3'1"x9'1")
1.830 mm high (6')



Poultry Coop

Tongue and groove walls to roosting box with OSB roof and floor. End opening panel. The run has no floor.

SIZE

950 mm wide x 2780 mm deep
(3'1"x9'1")
1830 mm high (6')

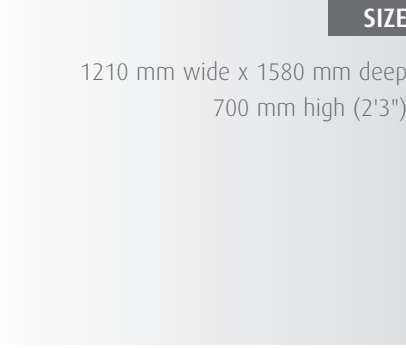


Hen House

Roosting box constructed from tongue & groove with OSB roof and floor. Contains roosting area and perch. No floor to run. Ideal for 2-3 chickens.side as pictured or at the front.

SIZE

1210 mm wide x 1580 mm deep
700 mm high (2'3")



Tortoise House

SIZE



Giant Sloper

SIZE



Run

SIZE



Jura Store PAGE 41

Superb durability

Garden Store PAGE 41

Ideal for small, unused space

Handy Store PAGE 42

For small or large garden

Giant Store PAGE 42

Unbeatable for storage



Storage

Strong and Secure

Many homes need additional storage space because the garage is full, the summerhouse is full, the shed is full!

We are pleased to offer in this section some attractive additional storage solutions. The units have been designed to give total access to the storage area offered.

Useful Store PAGE 43

Xxxxxxx

Bike Store PAGE 43

Xxxxxxx

Wheelie Bin Store PAGE 44

Xxxxxxx

Storage Box PAGE 44

Xxxxxxx



Jura Store

Supplied with OSB roof and floor.
The door opening in total measures
1385 mm (4' 6½") high and 1315 mm
(4' 3¾") wide

SIZE

1790 x 890 mm (6' x 2' 11")

External heights:

Eaves 1455 mm (4' 9")

Ridge 1550 mm (5' 1")

The first dimension refers to the side with the doors.

Garden Stores

We can never have enough space for storage. These units are ideal to go into a small unused space outdoors in order to keep your possessions undercover in a neat and tidy manner.

SIZES

630 x 590 mm (2' x 2')

1190 x 590mm (4' x 2')

External Heights:

Eaves 1429 mm (4' 8")

Ridge 1532 mm (5')

The first dimension refers to the side with the doors.



Handy Store

As the name depicts it is a handy store for the small or large garden. It could be used as a dedicated space for garden tools.

SIZE

990 x 628 mm (3' 3" x 1' 1")
Exterior ridge height:
1928mm (6' 4")



Useful Store

Double opening doors. Bikes, bins all manner of things. Had 2 opening windows. Tongue & groove walls, OSB roof and floor.

SIZE

1790 x 1230 mm (5'10" x 4')
Exterior ridge height:
1920 mm (6'3")



Giant Store

Unbeatable for storage as the double opening doors give complete access to an enormous area. Bikes, wheelbarrows, garden furniture – all can be accommodated in this building.

SIZE

1980 x 1058 mm (6' 6" x 3' 6")
Exterior ridge height: 2130 mm (7')



Bike Store

Can store 2 bikes comfortably. Or why not tidy away toys or garden equipment. Tongue & groove walls with OSB roof. No floor supplied. Full width double doors for easy access.

SIZES

1880 mm x 715 mm (6'2" x 2'4")
1415 mm high at front sloping to
1205 mm at rear (4'7¾" x 3'11½")

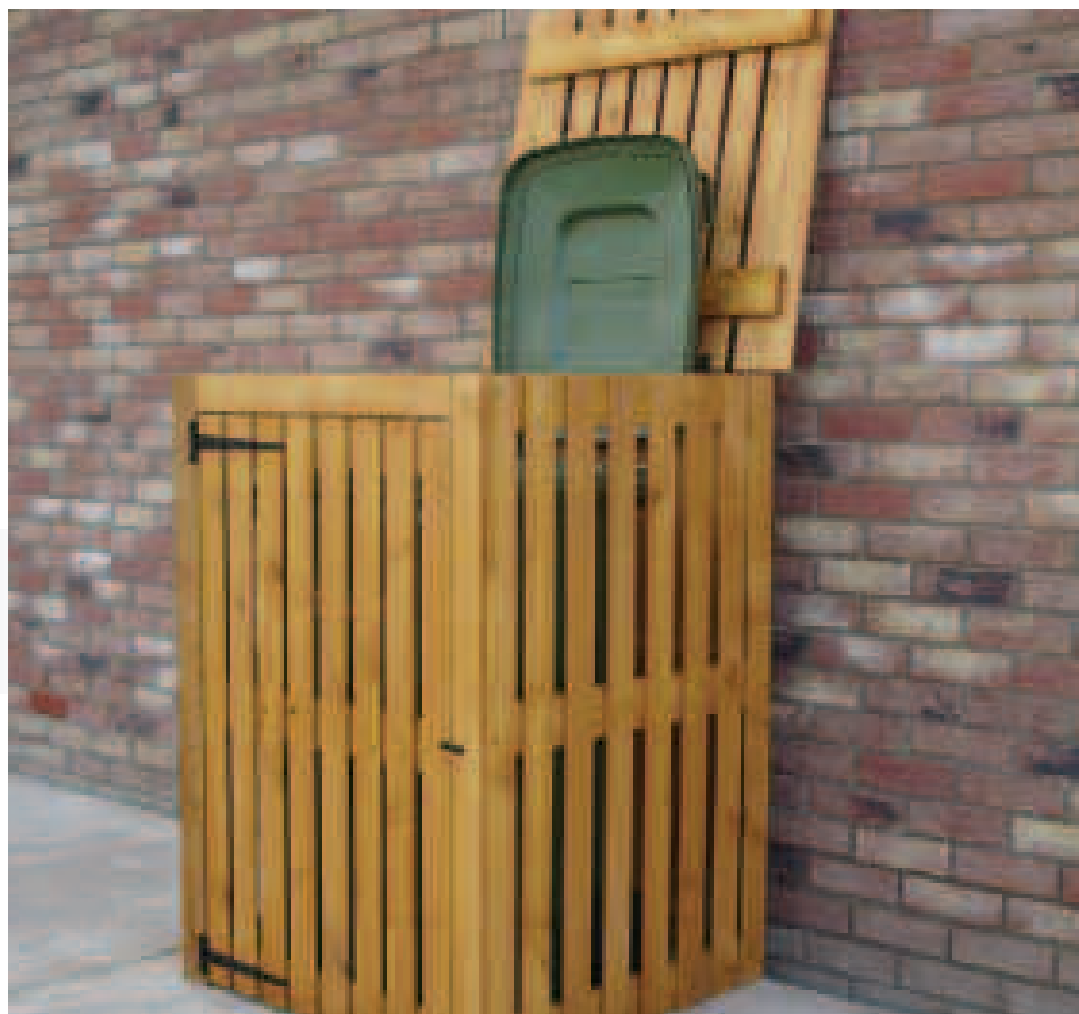


Wheelie Bin Store

Slatted solid timber construction, opening top can be hinged in 4 ways to give best lid access depending on location. Full width door for easy access.

SIZE

830 mm x 830 mm
(2'8½" x 2'8½")
1200 mm high (3'11")



Type 1

A complete kit which is easy to assemble following our comprehensive instructions. Timber used is pressure treated, joists 28 x 120mm Deckboards 28 x 120mm, posts 90x90mm, spindles 34 x 34mm, handrail 35 x 80mm, overall height 1190mm (applies to all deck kits).

SIZE

2200 x 2200 mm (7' 3" x 7' 3")



Storage Box

Wall constructed using solid pine tongue & groove. Could be used inside or outside. Ideal as blanket box, sports equipment store – the possibilities are almost endless. Hinged lid. Tongue & groove walls with OSB roof and floor.

SIZE

1250 mm x 550 mm (4'1" x 1'9½")
645 mm high (2'1")



Type 2

As can be seen from the photo an ideal shaped deck leading from your patio doors into the garden.

SIZE

2200 x 2800 mm (7' 3" x 9' 2")

Type 3

This Deck can be placed adjacent to your property or equally used as a focal point in your garden for entertaining upon.

SIZE

4500 x 2200 mm (14' 9" x 7' 3")



Type 4

The large shaped front section invites you onto the deck area. Although supplied with rails along the back section these could be omitted if placed adjacent to your house as a patio area leading into the garden.

SIZE

4500 x 3200 mm (14' 9" x 10' 6")



SHIRE
BUILT AROUND OUR REPUTATION

Pine Lodges

A Place to Relax

A Shire Pine Lodge is an inspiration harnessing nature's finest to create an individual atmosphere to each building.

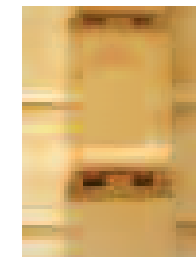
Shire enjoy unrivalled reputation for quality of product & service to customers.

Only selected high quality materials from proven sustainable sources have been used throughout the construction of our Pine Lodges.

Our imaginative designs are unique and inspirational to meet the aspirations of our customers.

Shire Pine Lodge Specials can be designed by our team to meet your specific requirements, home offices, leisure buildings, swimming pool enclosures, shops, cafeterias.

Our CAD operators are highly skilled and can work with you to design a building to meet with your requirement.



Assembly

Comprehensive accurate and easy to follow assembly instructions are supplied with detail showing where

each component fits. All log components are individually coded to correspond with the codes and detail shown on the assembly instructions. If you wish our distributors can offer you a complete package of advice, supply and assembly.

Request our brochure,
simply by calling us on
01945 465295
or emailing
sales@shiregb.co.uk

